

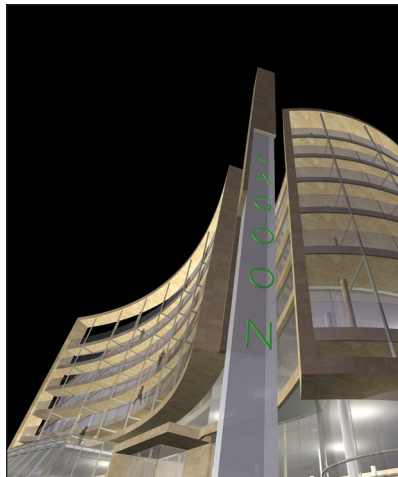


# 2011 BUILDING COMMUNITY

VISUALS AND MODELS  
OF THE NEW URBAN COMMUNITY

**AUGUST 15 – 19**  
at IDS Crystal Court  
7th and Nicollet in Minneapolis

## Exhibitors Wanted



VISUALS FROM PAST EXHIBITIONS



Community oriented development projects will be emphasized. Displays will be open to the public, showing new developments in Minneapolis, Hennepin County and Minnesota.

**Exhibitor Fees:** \$200 - \$600 for 2ft., 3ft. or 6ft. tables

**Best floor placement for sponsors responding by June 10.**

**Sponsor Names Listed in ads:** \$100

**Major Exhibitors will have speaking opportunities**

**For more information about display opportunities please respond by June 10, 2011**

### EVENT ORGANIZER

Peter Bruce, Consultant  
**612.275.5541** | 612.827.8181 FAX  
pbruceceo@aol.com  
Community Enhancement & Organizing  
5218 11th Avenue South  
Minneapolis, MN 55417

### DISPLAY TOPICS (partial list)

Downtown and Neighborhood Projects  
Housing, Retail, Hotels and Transportation  
Rail/Transit Corridors  
Green Buildings  
Public Buildings and Spaces

## SPONSORS AND EXHIBITORS

Hosted by IDS Center Crystal Court

### 2011 SPONSORS:

Minneapolis Community Planning and Economic Development

Hennepin County Regional Railroad Authority

Hennepin County Housing, Community Works & Transit

**Previous Sponsors Include:**  
Minneapolis Chapter of the American Institute of Architects

LANDFORM  
Towle Properties, Inc.  
Maxfield Research, Consultants  
BKV Group  
The Ackerberg Group  
URS Corporation  
ESG Architects  
Leer DesignWorks, LLC  
Pedestrian Studies  
Duan Corporation  
Sienna Corp.  
Finance and Commerce

Brighton Development  
Principal Real Estate Investors  
KKE Architects  
HGA Architects  
RSP Architects  
Java Properties  
Venture Village Neighborhood  
Mortenson Construction  
University District Alliance  
Central Corridor LRT Design Center  
Ryan Companies  
Pedestrian Studies